

Anti-Thrombotic Management in Endoscopy

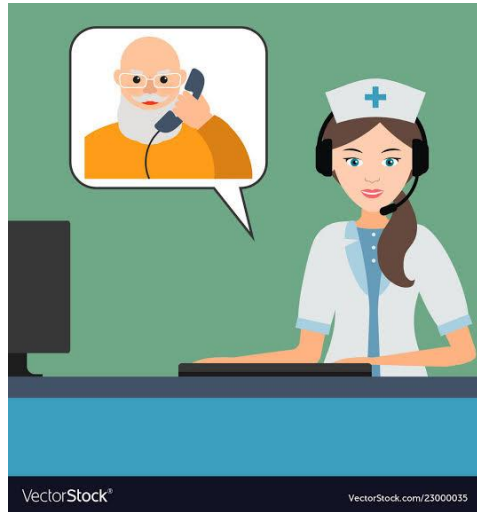
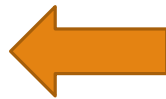
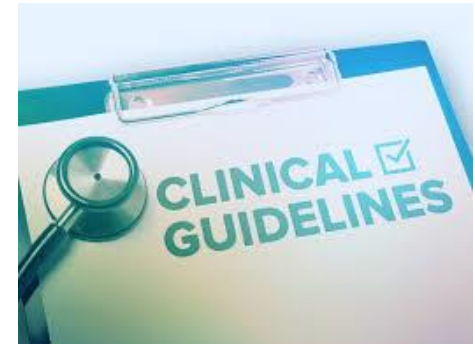
KATE LODGE RN

KRISTIN MCLOUGHLIN RN

GASTROENTEROLOGY DAY UNIT

CHRISTCHURCH PUBLIC HOSPITAL

Our Role



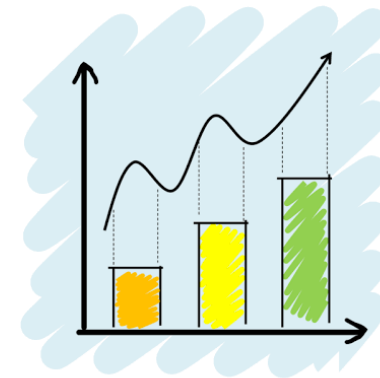
Referral Stats

2017-508 referrals- 63% anticoagulants vs 37% anti-platelets

2018-496 referrals- 68% anticoagulants vs 32% anti-platelets

Jan-Sept 2019 600 referrals- 67% anticoagulants vs 33% anti-platelets

These numbers are expected to increase with the introduction of the National Bowel Screening programme.



Anticoagulant and Anti-platelet Management- Endoscopy Guidelines

- Recently updated CDHB policies
- Clear pathways for individual medications
- Streamlined patient plans as much as possible
- Improved and updated referral process to Haemostasis Service.



Haemostasis Service

- Don't deal with anti-platelet medications
- Refer high thrombotic risk patients that require bridging therapy,
- Nursing staff manage patient through the pre and post procedural period to ensure the safe cessation and recommencement of their anticoagulation,
- They arrange clexane supplies, education and POC INR testing,
- Treatment plan available on Health Connect South.



Patient Scenario - Dabigatran

Mrs Smith 85 yr old female

Ongoing issues swallowing solids

Referral received to dept 3 months ago

Triaged as low priority

Booked for gastroscopy

Pmhx:

Type 2 diabetes

COPD

HTN

GORD

Osteoarthritis

Atrial fibrillation-anticoagulated on dabigatran



Assessment

Is it still appropriate to
proceed?

Assessment

Does the patients' anticoagulation need to be ceased for the procedure?

What is the thrombotic risk?

Pmhx:

Type 2 diabetes

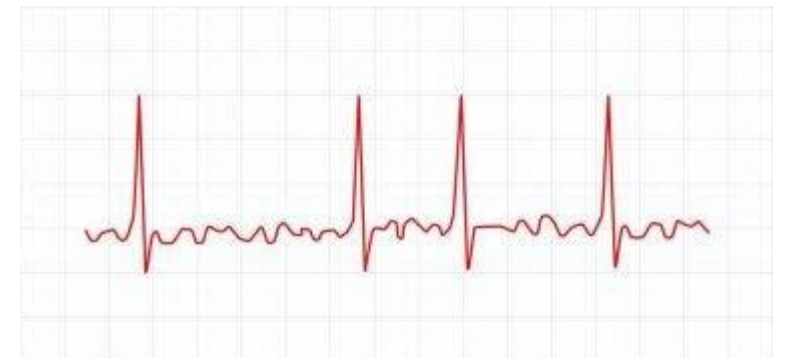
COPD

HTN

GORD

Osteoarthritis

Atrial fibrillation - anticoagulated on dabigatran



Mrs Smith CHA₂DS₂ VASc score: 5

Risk Factors	Score	CHA2DS2-VASc score	Stroke Risk per Year	
Congestive Heart Failure/LV dysfunction	1	0	0%	
Hypertension	1	1	1.3%	1-3 Low
Age ≥ 75 years	2	2	2.2%	
Diabetes Mellitus	1	3	3.2%	
Stroke/TIA/Thromboembolism	2	4	4.0%	4-5 Intermediate
Vascular Disease	1	5	6.7%	
Age 65 – 74	1	6	9.8%	6+ High
Female	1	7	9.6%	
		8	6.7%	
		9	15.2%	

Renal function

Recent blood result: Creatinine 87 eGFR 57






However.....

Wt: 60kg

Cockcroft gault equation Crcl: 40 mls/min



5 Stages Of Kidney Disease

Stage 1	Stage 2	Stage 3A	Stage 3B	Stage 4	Stage 5
$GFR \geq 90$	$89 \geq GFR \geq 60$	$59 \geq GFR \geq 40$	$44 \geq GFR \geq 30$	$29 \geq GFR \geq 15$	$GFR < 15$
					
Normal or high function	Mildly decreased function	Mild to moderately decreased function	Severely decreased function	Kidney failure	

Mrs Smiths Plan

Pre procedure:

Stop dabigatran 4/7 pre procedure

No routine blood test on admission

Bridging clexane not recommended

Post procedure:

Restart 24-72 hrs

Questions?

